



# BUCKET WORK CENTRE CATALOGUE

**KLEIN<sup>®</sup>  
TOOLS** 

# CONTENTS



**01** S-HOOK MODULE  
ATTACHMENTS **6**

---



**02** RAIL SYSTEM MODULE  
ATTACHMENTS **13**

---



**03** ACCESSORIES **27**

---



# Linework Elevated

The Bucket Work Center converts any aerial bucket into a fully customisable workspace designed for linemen.



# The Modular Workspace Built For Linemen

Built on a secure rail system that locks to standard bucket lips, the patented BWC allows you to customise your bucket for each job. No more digging through piles of tools or fighting with loose gear when you're working at height – everything has its place, stays secure.

How it Works - Secure Rail Attachment

## Secured & Specialised Mounting

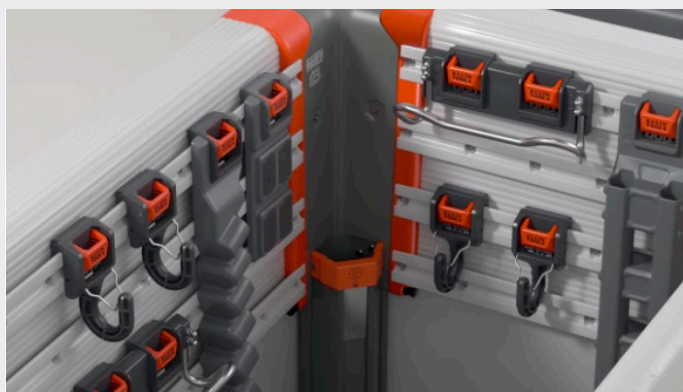
The rail attachment system locks your setup to the bucket rail in seconds, giving you a safe and efficient workspace. Compatible with or without insulated liners, you can install 1, 2, or 3 walls for a fully customisable setup.



How it Works - Tools And Modularity

## Your Setup, Your Way

Personalise your bucket to match the way you work. Change it up job to job, or keep your perfect setup locked in exactly how you want.



## What does it Fit?

The Bucket Work Center retrofits to most existing aerial bucket trucks and integrates seamlessly into new equipment orders. Configure the BWC for 1 man, 1.5 man, or 2 man utility buckets – the modular system adapts to your crew size and job requirements.

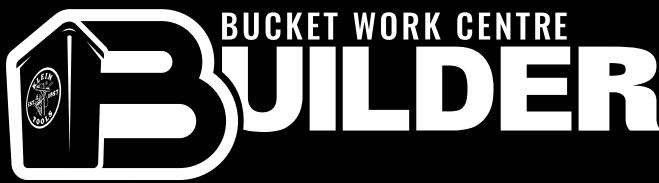
View our **Instruction Guide** Here



# BUILD YOUR OWN BUCKET

An ecosystem that will revamp the way a Lineman works. It allows a Lineman to customise their workspace, just like other professionals customise their office space. This will be "The Lineman's office." The Bucket Work Center easily connects to aerial buckets with a standard 2" or 3" (51mm to 76mm) lip and is made of impact resistant materials with dielectric properties to help stand up to the toughest work environments. An assortment of modules are available to customise each workstation to fit the tools needed for the job.

## CUSTOMISE YOUR WORKSPACE



EMAIL YOUR PRODUCT LIST TO OUR CUSTOMER SERVICE TEAM, OR SEE YOUR LOCAL KLEIN REPRESENTATIVE

[salesvic@kleintools.com.au](mailto:salesvic@kleintools.com.au)

### CHOOSE YOUR BUCKET



1 MAN

1.5 MAN

2 MAN

### SELECT FROM AVAILABLE PRODUCTS

Revamp the way you work.



Parts List:

- x1 BC100WA 1 Man Wall Assembly, Rail System ⓘ
- x1 BC599 Integrated Corner Piece, Rail System ⓘ
- x1 BC501C Hard Tool Storage Module, Rail System ⓘ
- x1 BC502C Tool Apron Module, Rail System ⓘ
- x1 BC507C Auger Bit Storage Module, Rail System ⓘ
- x1 BC506C Closed Hook Module, Rail System ⓘ
- x1 BC509C Socket Storage Module, Rail System ⓘ

SCAN HERE

Visit Our Online Bucket Work Centre Builder  
Make Your Dream Office A Reality



**DISCLAIMER:** The Klein Tools Bucket Work Center online builder tool is for demonstration purposes only. Actual product may look different.

# S-Hook Module Attachments



\*Utility Bucket S-Hooks are sold separately to all attachments shown



## A-BC100S

### Wall Assembly Module, S-Hook

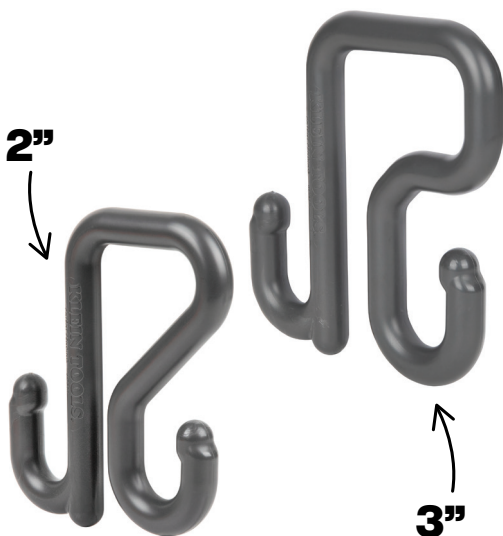
- Wall Assembly, S-Hook Module uses 2" or 3" (51 or 76mm) S-Hooks (Part No. A-BC311, A-BC312, sold separately) to connect to standard size utility buckets
- UV resistant, dielectric plastic (up to 35kV) to withstand work conditions from -32°C to 52°C
- 40lb (18.1kg) load rating
- Lineman can transform their workspace with the Bucket Work Center modules to become The Lineman's Office, similar to how other professionals customise their office space
- Multiple rails on the Bucket Work Center Wall Assembly allow horizontal and vertical customisation of module positioning
- The Wall Assembly Rail System is available in 3 sizes to accommodate the standard 1 man, 1.5 man, or 2 man buckets (Part No. A-BC100WA, A-BC150WA, A-BC200WA sold separately)

## A-BC311 | A-BC312

### 2 & 3" (51 to 76mm)

### Utility Bucket, S-Hook

- Lineman can transform their workspace with the Bucket Work Center modules to become the Lineman's office, similar to how other professionals customise their office space
- S-Hook modules are hung horizontally across the rim of an aerial bucket to maximise space
- Klein's S-Hook attaches to utility buckets with the standard 2" or 3" (51 or 76mm) bucket lip and can slide across the bucket to easily customise the position of the tool modules
- The 2" & 3" (51 or 76mm) S-Hook connects to all of the Bucket Work Center S-Hook modules
- Made with impact resistant nylon to stand up to tough weather conditions





A-BC501S

## Hard Tool Storage Module, S-Hook

- Lineman can transform their workspace with the Bucket Work Center modules to become the Lineman's office, similar to how other professionals customise their office space
- S-Hook modules are hung horizontally across the rim of an aerial bucket to maximise space
- S-Hooks are available in 2 sizes to accommodate buckets with the standard 2" or 3" (51 or 76mm) bucket lip (Part No. A-BC311, A-BC312; sold separately)
- The Hard Tool Storage Module has 18 compartments to accommodate a wide variety of Lineman tools
- Flexible retainers hold tools in place to quickly identify the tool needed for the job
- 2 integrated, Rare Earth magnetic plates are located on the front of the module to quickly hold metal hand tools and parts



A-BC502S

## Tool Apron Storage Module, S-Hook

- Lineman can transform their workspace with the Bucket Work Center modules to become the Lineman's office, similar to how other professionals customise their office space
- S-Hook modules are hung horizontally across the rim of an aerial bucket to maximise space
- S-Hooks are available in 2 sizes to accommodate buckets with the standard 2" or 3" (51 or 76mm) bucket lip (Part No. A-BC311, A-BC312; sold separately)
- Tool Apron Storage Module has 12 compartments to accommodate a wide variety of Lineman tools
- Double stitched hammer loop and knife pouch helps keep tools secure when not in use
- 2 integrated, Rare Earth magnetic plates are located on the front of the module to quickly hold metal hand tools and parts
- Made with heavy-duty, UV resistant plastic to stand up to tough working conditions



A-BC504S

## Magnetic Tool Storage Module, S-Hook

- Lineman can transform their workspace with the Bucket Work Center modules to become the Lineman's office, similar to how other professionals customise their office space
- S-Hook modules are hung horizontally across the rim of an aerial bucket to maximise space
- S-Hooks are available in 2 sizes to accommodate buckets with the standard 2" or 3" (51 or 76mm) lip (Part No. A-BC311, A-BC312; sold separately)
- The Magnetic Tool Storage Module has four Rare Earth magnetic plates that are strong enough to hold metal hand tools and parts
- Magnetic plates are located on the front of the module to quickly access the tools and parts needed for the job
- Made with heavy-duty, UV resistant plastic to stand up to tough working conditions



A-BC507S

## Auger Bit Storage Module, S-Hook

- Lineman can transform their workspace with the Bucket Work Center modules to become the Lineman's office, similar to how other professionals customise their office space
- S-Hook modules are hung horizontally across the rim of an aerial bucket to maximise space
- S-Hooks are available in 2 sizes to accommodate buckets with the standard 2" or 3" (51 or 76mm) bucket lip (Part No. A-BC311, A-BC312; sold separately)
- The Auger Bit Storage Module has 2 slots to store 12" (305mm), 18" (457mm), and 24" (610mm) long auger bits
- Simply drop Klein's Aluminium Spacer into one slot to store a 12" (305mm) auger bit in the 18" (457mm) holder or store an 18" (457mm) long auger bit in the 24" (610mm) bit holder (Part No A-BC507; sold separately)
- Made with heavy-duty, UV resistant plastic to stand up to tough working conditions



A-BC508S

## Utility Bar Storage Module, S-Hook

- Lineman can transform their workspace with the Bucket Work Center modules to become the Lineman's office, similar to how other professionals customise their office space
- S-Hook modules are hung horizontally across the rim of an aerial bucket to maximise space
- S-Hooks are available in 2 sizes to accommodate buckets with the standard 2" or 3" (51 or 76mm) lip (Part No. A-BC311, A-BC312; sold separately)
- The Utility Bar Storage Module holds hammers, straps, ropes and other long handled tools linemen use on a daily basis
- The 10" (254mm) long bar allows tools to slide in and out with ease for easy access
- Made with heavy-duty, UV resistant plastic to stand up to tough working conditions
- 2 S-Hooks are required to help secure the module to the aerial bucket



A-BC509S

## Socket Storage Module, S-Hook

- S-Hook modules are hung horizontally across the rim of an aerial bucket to maximise space
- S-Hooks are available in 2 sizes to accommodate buckets with the standard 2" or 3" (51 or 76mm) bucket lip (Part No. A-BC311, A-BC312; sold separately)
- The Socket Storage Module has 6 slots to store commonly used impact socket sizes or Klein's Impact Socket Set (Part No. A-66010; sold separately)
- Magnetic slots to keep sockets in place during transit
- Impact sockets are stored from smallest to largest to quickly identify the right size needed for the job
- Made with heavy-duty, UV resistant plastic to stand up to tough working conditions
- 1 S-Hook is required to help secure the module to the aerial bucket



A-BC510S

## Hardware Pouch Module, S-Hook

- The Bucket Work Center Large Pouch Module includes a dual action carabiner that helps keep tools and parts secure when in transit
- Drain holes to prevent water build-up
- Rare-Earth magnets to hold hardware and small tools
- Made with impact resistant nylon and 1680D material to stand up to tough working conditions
- Lineman can transform their workspace with the Bucket Work Center modules to become the Lineman's office, similar to how other professionals customise their office space
- S-Hook modules are hung horizontally across the rim of an aerial bucket to maximise space

**SPECIAL  
ORDER**



A-BC511S

## Large Pouch Module, S-Hook

- Drain holes to prevent water build-up
- Front Pockets to store hardware and accessories
- Rare-Earth magnets to hold hardware and small tools
- Robust latches on each Bucket Work Center module can be handled with class 2 insulated gloves to effortlessly reorganise the Rail System to help improve workspace efficiency
- Made with impact resistant nylon and 1680D material to stand up to tough working conditions
- Lineman can transform their workspace with the Bucket Work Center modules to become the Lineman's office, similar to how other professionals customise their office space
- S-Hook modules are hung horizontally across the rim of an aerial bucket to maximise space

**SPECIAL  
ORDER**



A-BC515S

## Hot Stick Holder, S-Hook

- The Bucket Work Center Hot Stick Holder S-Hook module is engineered to hold an 8' or 12' telescoping hot stick
- Two 3" (76mm) S-Hooks connect to the rarely used corner of a utility bucket for quick access to the hot stick
- Keep away dirt and debris by folding magnetic flap over the hot stick
- Impact resistant nylon stands up to tough working conditions
- Simply drop the spacer into the slot to store an 8' telescoping hot stick
- S-Hook modules are hung horizontally across the rim of an aerial bucket to maximise space
- Replacement Part: 3" (76mm) S-Hook (Part No. A-BC312)

**SPECIAL  
ORDER**



**SPECIAL ORDER**

**A-BC530S**  
**20" (508mm)**  
**Deep Oval Bucket, S-Hook**

- Deep oval bucket features a 40lb (18.1kg) load capacity to carry heavy tools and bulk gear
- Multi-pocket organisation keeps tools separated and easy to find
- Weather-resistant cover shields gear from rain and debris
- High-visibility interior helps quickly identify tools
- S-Hook modules are hung horizontally across the rim of an aerial bucket to maximise space
- S-Hooks are available in two sizes to accommodate buckets with the standard 2" or 3" (51mm to 76mm) bucket lip (Part No. A-BC311, A-BC312; sold separately)



**New**



**2 Large Pockets**  
Provides ample space for storing essential tools



**2 Small Pockets**  
Allows for organized storage of smaller items, reducing clutter



**Compact Design**  
Fits smaller aerial buckets and tight workspaces

## A-BC531S Mini Apron, S-Hook

- Mini apron is built for compact, efficient tool storage in tight spaces
- Keeps essential tools sorted with two large and two small pockets
- Integrated tape thong offers quick access to tape rolls
- Stackable design customises your Bucket Work Center setup
- S-Hook modules are hung horizontally across the rim of an aerial bucket to maximise space
- S-Hooks are available in two sizes to accommodate buckets with the standard 2" or 3" (51mm to 76mm) bucket lip (Part No. A-BC311, A-BC312; sold separately)

[DATA SHEET](#)

New

SPECIAL ORDER



**FRONT**



**Special Cone Design**  
prevents snagging during tool insertion/removal

**Securely Holds 7/16" Impact Gun**  
As well as standard impact drills



**BACK**



**Retention Buckle**  
keeps tools secure when moving between jobsites.

## A-BC532S Impact Holder, S-Hook

- Built to hold 7/16" impact guns and standard drills
- Prevents tool snagging with smooth cone-shaped interior
- Keeps tools secure with integrated retention buckle for worry-free transport between jobsites
- Allows socket-on storage to save time on the job
- S-Hook modules are hung horizontally across the rim of an aerial bucket to maximise space
- S-Hooks are available in two sizes to accommodate buckets with the standard 2" or 3" (51mm to 76mm) bucket lip (Part No. A-BC311, A-BC312; sold separately)

New

SPECIAL ORDER



**Rigid Tool Holder**  
Securely holds handheld cutters and crimpers

**Reinforced Bottom Pocket**  
Enhances durability for long-lasting performance



**Drain Holes**  
Prevent water buildup and keep tools dry

## A-BC533S Cutter & Crimper Holder, S-Hook

- Built to hold handheld cutters and crimpers for quick access in the bucket
- Protects tools with a magnetic, weather-resistant shield for jobsite durability
- Improves durability with a reinforced bottom pocket built to withstand tough jobsite conditions
- Keeps tools dry with built-in drain holes to prevent water buildup
- S-Hook modules are hung horizontally across the rim of an aerial bucket to maximise space
- S-Hooks are available in two sizes to accommodate buckets with the standard 2" or 3" (51mm to 76mm) bucket lip (Part No. A-BC311, A-BC312; sold separately)

New

SPECIAL ORDER



**Rigid Pockets**  
Rigid pockets allow for smooth tool insertion and removal

**Additional Web Strapping**  
Designed for easy in/out access, reducing fumbling

**Fits 18" And 24" Bolt Cutters**  
Giving linemen a reliable storage solution



**Impact-Resistant**  
1680D Nylon Construction

## A-BC534S Nose Bag, S-Hook

- Built to hold 18" (457mm) and 24" (610mm) bolt cutters for secure, jobsite-ready storage
- Adds vertical storage flexibility with extra web strapping for bolt cutters or accessories
- Improves efficiency with rigid pockets that allow smooth tool insertion and removal
- Withstands harsh conditions with impact-resistant 1680D nylon construction
- S-Hook modules are hung horizontally across the rim of an aerial bucket to maximise space
- S-Hooks are available in two sizes to accommodate buckets with the standard 2" or 3" (51mm to 76mm) bucket lip (Part No. A-BC311, A-BC312; sold separately)

New

SPECIAL ORDER

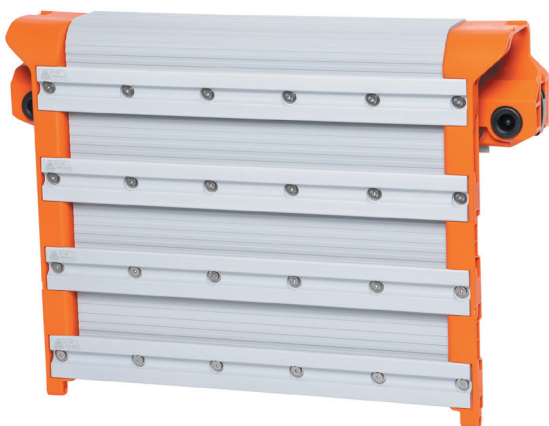
# Rail System Module Attachments



## A-BC100WA

### 1 Man, Wall Assembly, Rail System

- 1 Man Wall Assembly easily attaches to utility buckets with quick release and adjustable clamps
- UV resistant, dielectric plastic (up to 35kV) to withstand work conditions from -32°C to 52°C
- Multiple rails on the Bucket Work Center Wall Assembly allow horizontal and vertical customisation of module positioning
- 50lb (22.7kg) load rating for each rail on the wall assembly
- Special design bumpers allow Rail System to stay in place during transit and articulation of aerial buckets
- The Wall Assembly Rail System is available in 3 sizes to accommodate the standard 1 man, 1.5 man, or 2 man buckets (Part No. A-BC150WA, A-BC200WA sold separately)



## A-BC150WA

### 1.5 Man, Wall Assembly, Rail System

- 1.5 Man Wall Assembly easily attaches to utility buckets with quick release and adjustable clamps
- UV resistant, dielectric plastic (up to 35kV) to withstand work conditions from -32°C to 52°C
- Multiple rails on the Bucket Work Center Wall Assembly allow horizontal and vertical customisation of module positioning
- 50lb (22.7kg) load rating for each rail on the wall assembly
- Special design bumpers allow Rail System to stay in place during transit and articulation of aerial buckets
- The Wall Assembly Rail System is available in 3 sizes to accommodate the standard 1 man, 1.5 man, or 2 man buckets (Part No. A-BC150WA, A-BC200WA sold separately)



A-BC200WA

## 2 Man Wall Assembly, Rail System

- 2 Man Wall Assembly easily attaches to utility buckets with quick release and adjustable clamps
- UV resistant, dielectric plastic (up to 35kV) to withstand work conditions from -32°C to 52°C
- Multiple rails on the Bucket Work Center Wall Assembly allow horizontal and vertical customisation of module positioning
- 50lb (22.7kg) load rating for each rail on the wall assembly
- Special design bumpers allow Rail System to stay in place during transit and articulation of aerial buckets
- The Wall Assembly Rail System is available in 3 sizes to accommodate the standard 1 man, 1.5 man, or 2 man buckets (Part No. A-BC150WA, A-BC200WA sold separately)



A-BC501C

## Hard Tool Storage Module, Rail System

- Hard Tool Storage Module has 18 compartments to hold a wide variety of lineman tools
- Rare-Earth magnets to hold hardware and small tools
- Rubber flaps to hold tools during transit and are also adjustable and replaceable
- Robust latches on each Bucket Work Center module can be handled with class 2 insulated gloves to effortlessly reorganise the Rail System to help improve workspace efficiency
- Contrasting colour to easily identify latch mechanism to quickly attach and detach from the rail system
- Made with impact resistant nylon to stand up to tough working conditions



A-BC502C

## Tool Apron Storage Module, Rail System

- Tool Apron Module has 12 compartments to accommodate a wide variety of lineman tools
- 3 double stitched straps to hang additional tools
- Double stitched hammer loop and knife pouch helps keep tools secure when not in use
- Rare-Earth magnets to hold hardware and small tools
- Innovative design intended to be more durable than traditional tool aprons
- Bonus buckle for extra storage
- Robust latches on each Bucket Work Center module can be handled with class 2 insulated gloves to effortlessly reorganise the Rail System to help improve workspace efficiency
- Heavy-duty, water resistant 1680d material to stand up to tough working conditions



A-BC503C

## Work Tray Module, Rail System

- Connects to the Bucket Work Center Rail System and holds a wide variety of lineman hand tools, power tools, and hardware
- UV resistant, dielectric plastic (up to 35kV) to withstand work conditions from -32°C to 52°C
- Positioned on the outside of an aerial bucket with optimal height to easily access tools
- Supporting arms lock beneath rail for optimal fit
- Work Tray is 20.6" x 12.2" x 8.8" (520 x 310 x 220mm) to fit tools and hardware in a variety of sizes
- Multiple rails on the Bucket Work Center Wall Assembly allow horizontal and vertical customisation of module positioning



A-BC504C

## Magnetic Tool Storage Module, Rail System

- Rare-Earth magnetic plates hold hand tools, sockets, bits and small parts
- Strong enough to hold lineman's pliers
- Made with impact resistant nylon to stand up to tough working conditions
- Robust latches on each Bucket Work Center module can be handled with class 2 insulated gloves to effortlessly reorganise the Rail System to help improve workspace efficiency
- Lineman can transform their workspace with the Bucket Work Center modules to become the Lineman's office, similar to how other professionals customise their office space
- Multiple rails on the Bucket Work Center Wall Assembly allow horizontal and vertical customisation of module positioning



A-BC515C

## Hot Stick Holder, Rail System

- Integrates with the Bucket Work Center rail system to provide a tight, clean fit, keeping the work area clear and the hot stick supported in the corner
- Corner mounted design keeps hot stick supported and out of the way, freeing up workspace without sacrificing accessibility
- Includes a spacer to provide the flexibility of keeping 8' to 12' telescoping hot stick within arms reach
- Corner mounted holder keeps hot sticks supported and out of the way, reducing clutter
- Durable rain cover helps keep away rain and debris, keeping it clean, dry, and ready for work

New

SPECIAL ORDER



A-BC507C

## Auger Bit Storage Module, Rail System

- Auger Bit Storage Module has 2 slots to store 12" (305mm), 18" (457mm), or 24" (610mm) long auger bits
- Aluminium Spacer slides into one slot to store a 12" (305mm) auger bit in the 18" (457mm) holder or store an 18" (457mm) long auger bit in the 24" (610mm) bit holder
- Module will not melt with hot auger bits, or dull tips of auger bits
- Made with impact resistant nylon to stand up to tough working conditions
- Robust latches on each Bucket Work Center module can be handled with class 2 insulated gloves to effortlessly reorganise the Rail System to help improve workspace efficiency



A-BC508C

## Utility Bar Storage Module, Rail System

- Utility Bar Storage Module holds lineman tools including hammers, straps, and ropes
- 10" (254mm) long bar allows easy access to long handled tools
- Made with impact resistant nylon to stand up to tough working conditions
- Robust latches on each Bucket Work Center module can be handled with class 2 insulated gloves to effortlessly reorganise the Rail System to help improve workspace efficiency
- Lineman can transform their workspace with the Bucket Work Center modules to become the Lineman's office, similar to how other professionals customise their office space



A-BC509C

## Socket Storage Module, Rail System

- Fits a range of socket sizes from 3/8" to 1-1/8" (10mm - 29mm)
- Magnetic slots to keep sockets in place during transit
- Sockets are stored from smallest to largest to quickly identify the right size needed for the job
- Made with impact resistant nylon to stand up to tough working conditions
- Robust latches on each Bucket Work Center module can be handled with class 2 insulated gloves to effortlessly reorganise the Rail System to help improve workspace efficiency
- Lineman can transform their workspace with the Bucket Work Center modules to become the Lineman's office, similar to how other professionals customise their office space



A-BC510C

## Hardware Pouch Module, Rail System

- Connects to the Bucket Work Center Rail System and holds a wide variety of lineman hand tools and hardware
- Dual Action Carabiner helps keep tools and parts secure when in transit
- Drain holes to prevent water build-up
- Rare-Earth magnets to hold hardware and small tools
- Robust latches on each Bucket Work Center module can be handled with class 2 insulated gloves to effortlessly reorganise the Rail System to help improve workspace efficiency
- Contrasting colour to easily identify latch mechanism to quickly attach and detach from the rail system
- Made with impact resistant nylon and 1680d material to stand up to tough working conditions

**SPECIAL  
ORDER**



A-BC511C

## Large Pouch Module, Rail System

- Connects to the Bucket Work Center Rail System and holds a wide variety of lineman hand tools, power tools, and hardware
- Dual Action Carabiner keeps tools and parts secure when in transit
- Drain holes to prevent water build-up
- Front Pockets to store hardware and accessories
- Rare-Earth magnets to hold hardware and small tools
- Robust latches on each Bucket Work Center module can be handled with class 2 insulated gloves to effortlessly reorganise the Rail System to help improve workspace efficiency
- Contrasting colour to easily identify latch mechanism to quickly attach and detach from the rail system
- Made with impact resistant nylon and 1680d material to stand up to tough working conditions

**SPECIAL  
ORDER**



A-BC512C

## Multi-Tool Holder Module, Rail System

- Connects to the Bucket Work Center Rail System and holds a wide variety of lineman hand tools
- Metal hammer loop holds a lineman's hammer, wrenches and other long handled tools
- POM, Polyethylene, Impact modified Polypropylene and 1680d material to stand up to tough working conditions
- Robust clip on the back of the module can be handled with class 2 insulated gloves to effortlessly reorganise the Rail System to help improve workspace efficiency
- Lineman can transform their workspace with the Bucket Work Center modules to become The Lineman's Office, similar to how other professionals customise their office space

**SPECIAL  
ORDER**



A-BC513C

## Oval Bucket Module, Rail System

- Connects to the Bucket Work Center Rail System and holds a wide variety of lineman hand tools, power tools, and hardware
- Positioned on the outside of an aerial bucket with optimal height to easily access tools
- Finger grip for easy removal from inside of the aerial bucket
- Oval bucket is 14.5" x 7.5" x 10.8" (370 x 190 x 275mm) to fit tools and hardware in a variety of sizes
- Made with impact resistant nylon to stand up to tough working conditions
- Lineman can transform their workspace with the Bucket Work Center modules to become the Lineman's office, similar to how other professionals customise their office space



**OPEN**



**CLOSED**

A-BC505C

## Open Hook Module, Rail System

- Open Hook Module easily attaches to the inside rails of the Bucket Work Center Wall Assembly Rail System
- Made with impact resistant nylon to stand up to tough working conditions
- Robust latches on each Bucket Work Center module can be handled with class 2 insulated gloves to effortlessly reorganise the Rail System to help improve workspace efficiency

A-BC506C

## Closed Hook Module, Rail System

- Closed Hook Module easily attaches to the inside or outside rails of the Bucket Work Center Wall Assembly Rail System
- Single hook holds a wide variety of lineman tools
- Gated hook helps secure tools and helps prevent tools from falling
- Latch can easily be actuated with class 2 gloves to add or remove tools from hook
- Made with impact resistant nylon to stand up to tough working conditions



**OPEN**



**CLOSED**

A-BC517C

## Open Blanket Hook Modules, Rail System

- Open Blanket Hook Module easily attaches to the inside rails of the Bucket Work Center Wall Assembly Rail System
- Open Hook holds up to 4 blankets
- Made with impact resistant nylon to stand up to tough working conditions
- The Bucket Work Center is an ecosystem that will revamp the way a Lineman works

A-BC521C

## Closed Blanket Hook Modules, Rail System

- Closed Hook Module easily attaches to the inside or outside rails of the Bucket Work Center Wall Assembly Rail System
- Single hook holds a wide variety of lineman tools
- Gated hook helps secure tools and helps prevent tools from falling
- Latch can easily be actuated with class 2 gloves to add or remove tools from hook
- Made with impact resistant nylon to stand up to tough working conditions





A-BC520KIT

## Headlamp Holder 2 Piece Set

- Headlamp Holder Set includes the Rechargeable 2-Colour Headlamp with Strap (Part No. A-56414) and a Headlamp Holder (Part No. A-BC520C) that connects to the Bucket Work Center Rail System
- Rechargeable Headlamp is 3 lights in 1: a focused, long-range white spotlight, wide-casting floodlight, and low-intensity red LEDs
- Headlamp features bright white LEDs in 2 settings: Spotlight (Boost: 800lm for 4hrs, High: 600lm for 8hrs, Low: 300lm for 10hrs, Strobe: 100lm for 40hrs)
- Headlamp also has a Floodlight mode (High: 500lm for 5hrs, Medium: 250lm for 10hrs, ECO: 30lm for 27hrs) for versatile illumination options
- Low intensity red LEDs for non-blinding night vision (2.5lm for 56 hrs) also feature a long-lasting red strobe (2.5lm for 160hrs)

**SPECIAL ORDER**



A-BC599

## Integrated Corner Piece, Rail System

- Integrated Corner Piece seamlessly connects to the Wall
- 4 hooks and a flip bar can swivel in and out
- Accommodates different size lineman tools while making use of dead space in the corner
- Made with impact resistant nylon to stand up to tough working conditions
- Robust latches on each Bucket Work Center module can be handled with class 2 insulated gloves to effortlessly reorganise the Rail System to help improve workspace efficiency
- Lineman can transform their workspace with the Bucket Work Center modules to become the Lineman's office, similar to how other professionals customise their office space

**SPECIAL ORDER**



A-BC101C

## Hand Warmer Module, Rail and S-Hook

- The Bucket Work Center Hand Warmer Module is engineered to provide warmth to lineman's hands in the harshest winter conditions
- Rechargeable hand warmers have two heat modes with heating elements positioned to heat both the front and back of hands
- Oversized pouch and buttons for use with Class 2 gloves
- Includes 2 lithium-ion batteries which allows for one in use and the other as a backup
- Electric hand warmers are made from impact resistant nylon and 1680d materials to stand up to tough working conditions
- Compatible with Bucket Work Center Rail System with (2) S-Hook Replacement Cartridges (Part No. A-BCRP03) and (2) S-Hooks (Part No. A-BC312) included

**SPECIAL ORDER**

20"  
(508mm)



**SPECIAL  
ORDER**

A-BC530C

## 20" (508mm) Deep Oval Bucket, Rail System

- 40lb (18.1kg) load capacity carries heavy tools and bulk gear
- Multi-pocket organisation keeps tools separated and easy to find
- Weather-resistant cover shields gear from rain and debris
- High-visibility interior helps quickly identify tools
- Bucket Work Center rail system compatible for a customisable setup

### 4 DIVIDED ZONES

Interior features four 10-inch tall divider zones to keep tools organized and prevent shifting

### HIGH-VISIBILITY ORANGE INTERIOR:

Bright liner helps identify tools quickly, in low-light conditions



### BUCKET WORK CENTER RAIL COMPATIBLE

Fully integrates into the BWC rail system



IN PARTNERSHIP WITH  
**Attec**

**Attec  
APPROVED**

New



### KEY FEATURES

**2 LARGE POCKETS**  
Provides ample space for storing essential tools



**2 SMALL POCKETS**  
Allows for organized storage of smaller items, reducing clutter

**BUCKET WORK CENTER RAIL COMPATIBLE**  
Fully integrates into the BWC rail system



## A-BC531C Mini Tool Apron Storage Module, Rail System

- Built for compact, efficient tool storage in tight spaces
- Keeps essential tools sorted with two large and two small pockets
- Integrated tape thong offers quick access to tape rolls
- Stackable design customises your Bucket Work Center setup
- Seamlessly integrates into the Bucket Work Center modular system

New

SPECIAL ORDER



### KEY FEATURES

**RIGID POCKETS**  
Rigid pockets allow for smooth tool insertion and removal

**ADDITIONAL WEB STRAPPING**  
Designed for easy in/out access, reducing fumbling



**FITS 18" AND 24" BOLT CUTTERS**  
giving linemen a reliable storage solution

**IMPACT-RESISTANT**  
1680D Nylon Construction



## A-BC534C Nose Bag, Rail System

- Built to hold 18" (457mm) and 24" (610mm) bolt cutters for secure, jobsite-ready storage
- Adds vertical storage flexibility with extra web strapping for bolt cutters or accessories
- Improves efficiency with rigid pockets that allow smooth tool insertion and removal
- Withstands harsh conditions with impact-resistant 1680D nylon construction
- Seamlessly integrates into the Bucket Work Center modular system

New

SPECIAL ORDER



**FRONT**



**BACK**

**KEY FEATURES**

**SECURELY HOLDS 7/16" IMPACT GUN**  
As well as standard impact drills

**SPECIAL CONE DESIGN**  
prevents snagging during tool insertion/removal



**BUCKET WORK CENTER RAIL COMPATIBLE**  
Fully integrates into the BWC rail system



**A-BC532C**

**Impact Holder, Rail System**

- Built to securely hold 7/16" impact guns and standard drills, this durable Bucket Work Center tool holder keeps lineman gear organised and jobsite-ready
- Prevents tool snagging with smooth cone-shaped interior
- Keeps tools secure with integrated retention buckle for worry-free transport between jobsites
- Allows socket-on storage to save time on the job
- Rail-ready for clean integration into the Bucket Work Center modular system

**New**

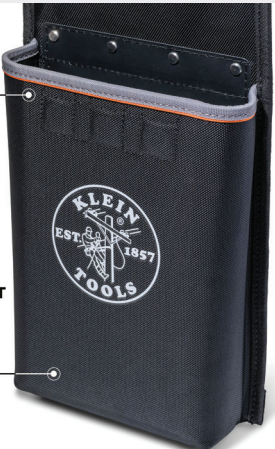
**SPECIAL ORDER**



**KEY FEATURES**

**RIGID TOOL HOLDER**  
Securely holds handheld cutters and crimpers

**REINFORCED BOTTOM POCKET**  
Enhances durability for long-lasting performance



**MAGNETIC PROTECTIVE FLAP**  
Securely shields tools from rain and debris



**A-BC533C**

**Crimper Holder, Rail System**

- Designed to securely hold hand-held cutters and crimpers, this durable lineman bucket accessory keeps essential tools within quick reach on the jobsite
- Protects tools with a magnetic weather-resistant shield for jobsite durability
- Improves durability with a reinforced bottom pocket built to withstand tough jobsite conditions
- Keeps tools dry with built-in drain holes to prevent water buildup
- Rail-ready for clean integration into the Bucket Work Center modular system

**New**

**SPECIAL ORDER**



**KEY FEATURES**



**A-BC535  
Straight Bucket,  
17" (432mm) Utility Bucket**

- Built to carry up to 200lb (90kg) of tools and gear, this heavy-duty utility bucket is designed for linemen and tough jobsite conditions, ensuring reliable tool storage
- Constructed with impact-resistant 1680D nylon for long-lasting durability in tough environments
- Designed with integrated drain holes to prevent water buildup
- Reinforced with tough nylon web strapping for added strength and secure handling
- Features a high-visibility orange interior to help quickly identify tools in low-light conditions

**New**

**SPECIAL ORDER**



**A-BC701SL  
Tray Module, Rail System**

- Versatile catch-all tray provides convenient storage space and the quick-access design for tools, hardware, and small parts
- 25lb (11.3kg) load rating handles weather exposure for reliable long-term durability
- Weather-resistant design ensures reliable performance and withstands UV exposure and harsh job site conditions
- High-impact resistant plastic construction withstands tough conditions
- Bucket Work Centre and MODbox™ compatible rail system means no more searching through piles of tools or fighting with loose gear; keep everything organised and secure when working at height

**New**

**SPECIAL ORDER**

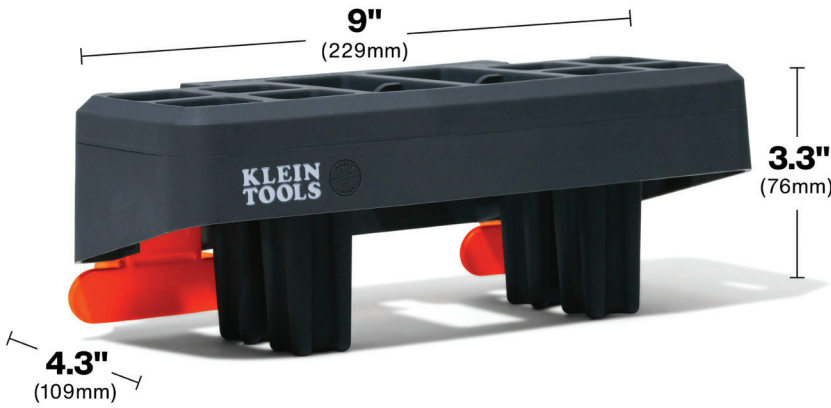
**Modular Catch-All Tray**  
Attaches VIA BWC/MOD

25LBS  
MAX

Impact  
Resistant

Weather  
Resistant

**Attaches VIA BWC/  
MOD Clips**  
Works on entire ecosystem of products



## A-BC702SL Tool Holder Module, Rail System

- Customisable tool holder with four through holes and swappable inserts, soft plastic components position left or right to securely hold equipment
- Ideal for utility, electrical, or industrial work environments to keep essential tools and parts organised and accessible in man lifts, scissor lifts, and elevated work platforms
- 15lb (6.8kg) load rating handles weather exposure for reliable long-term durability
- Weather-resistant design ensures reliable performance and withstands UV exposure and harsh job site conditions
- High-impact resistant plastic construction withstands tough conditions

New

SPECIAL ORDER

### Modular Tray

Designed to hold tools specific to utility work from man lifts



### Attaches VIA BWC/ MOD Clips

Works on entire ecosystem of products



## A-BC703SL Sliding Drawer Module, Rail System

- Organised sliding drawer provides smooth easy access to keep frequently used tools and parts close for efficient workflow
- Customisable interior with removable inserts configurable in any orientation and allows drawer setup to match specific tools or workflow preferences
- 15lb (6.8kg) load rating handles weather exposure for reliable long-term durability
- Weather-resistant design ensures reliable performance and withstands UV exposure and harsh job site conditions
- High-impact resistant plastic construction withstands tough conditions

New

SPECIAL ORDER

### Modular Tray

Designed to hold tools specific to utility work from man lifts



### Attaches VIA BWC/ MOD Clips

Works on entire ecosystem of products



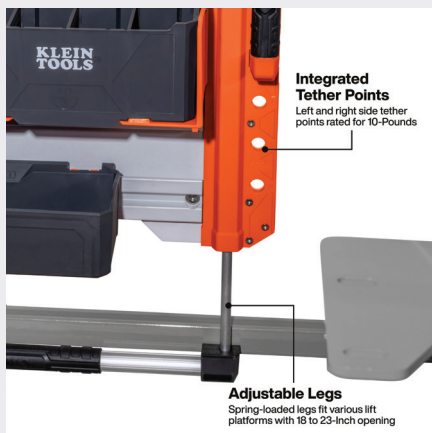


**A-BC700WA**  
**LiftPro 24" (610mm) Wall**

- Modular tool organisation system enables efficient lift to lift mobility with a 24" (610mm) wall mount design with four interior rails and one exterior rail
- Spring-loaded adjustable legs fit 18" to 23" (457 to 584mm) lift openings to ensure secure installation to buckets, man lifts, and scissor lifts
- Heavy-duty rails rated for 50lb (22.7kgs) each to support tools trays and equipment
- Integrated tether points on left and right sides rated for 10lb (4.5kg) provide secure tool attachment and enhances safety during elevated work
- Locking pins on left and right sides secure system to man lifts and scissor lifts and are easy to transfer between trucks and from job to job
- Bucket Work Center and MODbox™ compatible rail system means no more searching through piles of tools or fighting with loose gear



**Locking Pin Security**  
 Left and right side locking pins secure system to top mounting bar



**Integrated Tether Points**  
 Left and right side tether points rated for 10-Pounds

**Adjustable Legs**  
 Spring-loaded legs fit various lift platforms with 18 to 23-inch opening



**New**



## A-BC99WA

### Storage Wall Assembly

- Storage Wall Assembly allows you to store your Bucket Work Center Modules on truck bin's or any flat storage location
- UV resistant, dielectric plastic (up to 35kV) to withstand work conditions from -32°C to 52°C
- Screw holes allow you to easily mount to truck cabins, walls and workstations
- Lineman can transform their workspace with the Bucket Work Center modules to become The Lineman's Office, similar to how other professionals customise their office space
- The Wall Assembly Rail System is available in 3 sizes to accommodate the standard 1 man, 1.5 man, or 2 man buckets (Part No. A-BC100WA, A-BC150WA, A-BC200WA sold separately)
- Storage Wall Assembly not for utility buckets

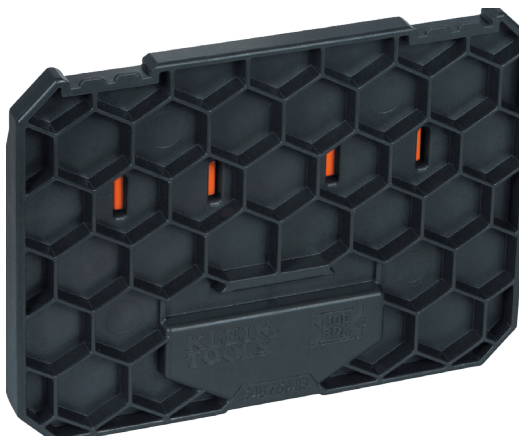


Perfect fit for the **Tradesman Tumbler A-55580** sold separately

## A-54817MB

### MODbox™ Cup Holder Rail Attachment

- MODbox™ components easily interconnect for a customised mobile workstation
- Easily attach and move the cup holder onto any system side rail with one-handed release for added convenience
- Keep your favorite drink within reach with the Klein Tools MODbox™ Cup Holder Rail Attachment
- Cup holder swivels to keep your drink upright when the MODbox™ System is tilted and in motion
- Flexible fingers adjust to secure different sizes of drink containers
- Store beverage holder inside the Rolling Toolbox (Part No. A-54100MBX) with the Internal Rail Accessory (Part No. A-54818MB), sold separately



## A-54875MB

### MODbox™ Case Adapter Rail Attachment

- MODbox™ components easily interconnect for a customised mobile workstation
- Attach Case Adapter to side rails for convenient access to case contents; open the case lid while connected to the side rails
- Secure fit for small extended, and medium MODbox™ compatible cases
- Choose from a variety of cases that contain useful tools such as Klein Pass Through Socket Wrenches, step bits, ProFlex Impact Drivers, and precision drivers; sold separately
- Easily attach and move the Case Adapter onto any system side rail with one-handed release for added convenience
- Case to adapter connection is the same as case to case connection for ease of use
- Secure the Case Adapter inside the Rolling Toolbox (Part No. A-54100MBX) with the Internal Rail Accessory (Part No. A-54818MB), sold separately

# Bucket Work Centre Accessories



## A-BCRP01

### Cartridges with Blank Insert Cartridge, Rail System, 2 Pack

- Cartridge and Blank Insert Cartridge replacement part for the Bucket Work Center Rail System
- Sold as a 2 Pack
- Easily secure replacement part with provided screws
- Includes (2) cartridges and (1) blank cartridge
- Lineman can transform their workspace with the Bucket Work Center modules to become the Lineman's office, similar to how other professionals customise their office space
- Multiple rails on the Bucket Work Center Wall Assembly allow horizontal and vertical customisation of module positioning
- The Wall Assembly Rail System is available in 3 sizes to accommodate the standard 1 man, 1.5 man, or 2 man buckets (Part No. A-BC100WA, A-BC150WA, A-BC200WA sold separately)

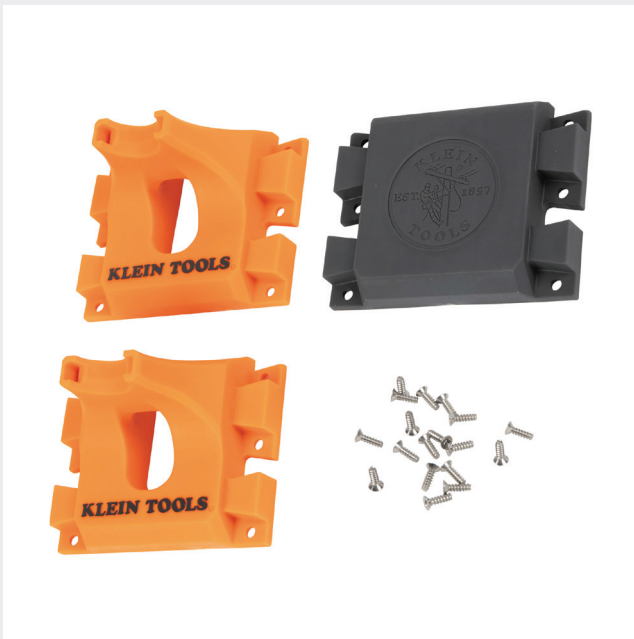


## A-BCRP02

### Replacement Cartridges, Rail System, 4 Pack

- Cartridge replacement part for the Bucket Work Center Rail System
- Sold as a 4 Pack
- Includes (4) cartridge rail system modules
- The Bucket Work Center is an ecosystem that will revamp the way a Lineman works
- Lineman can transform their workspace with the Bucket Work Center modules to become the Lineman's office, similar to how other professionals customise their office space
- Multiple rails on the Bucket Work Center Wall Assembly allow horizontal and vertical customisation of module positioning
- The Wall Assembly Rail System is available in 3 sizes to accommodate the standard 1 man, 1.5 man, or 2 man buckets (Part No. A-BC100WA, A-BC150WA, A-BC200WA sold separately)





A-BCRP03

### Cartridges with Blank Insert Cartridge, S-Hook, Rail System, 2 Pack

- Cartridge and Blank Insert Cartridge replacement part for the Bucket Work Center S-Hook modules
- Sold as a 2 Pack
- Easily secure replacement part with provided screws
- Includes (2) cartridges and (1) blank cartridge for use with the wall assembly rail system
- Lineman can transform their workspace with the Bucket Work Center modules to become the Lineman's office, similar to how other professionals customise their office space
- S-Hook modules are hung horizontally across the rim of an aerial bucket to maximise space



A-BCRP04

### Cartridges, S-Hook, Rail System, 4 Pack

- Cartridge replacement part for the Bucket Work Center S-Hook modules
- Sold as a 4 Pack
- Easily secure replacement part with provided screws
- Includes 4 cartridges for use with the wall assembly rail system
- Lineman can transform their workspace with the Bucket Work Center modules to become the Lineman's office, similar to how other professionals customise their office space
- S-Hook modules are hung horizontally across the rim of an aerial bucket to maximise space



A-BCRP05

### Hard Tool Module Flaps, Rail System, 9 Pack

- Hard Tool Module Flaps replacement part for the Bucket Work Center Hard Tool Storage Module, sold separately (Part No. A-BC501C, A-BC501S)
- 9 Pack of adjustable rubber flaps
- Easily secure replacement part with provided screws
- Includes (9) rubber flaps to keep tools in their place
- Lineman can transform their workspace with the Bucket Work Center modules to become the Lineman's office, similar to how other professionals customise their office space
- The Wall Assembly Rail System is available in 3 sizes to accommodate the standard 1 man, 1.5 man, or 2 man buckets (Part No. A-BC100WA, A-BC150WA, A-BC200WA sold separately)



**SPECIAL ORDER**



## A-BC524C 1 Man Bucket Cover

- Ratcheting tightening mechanism ensures secure installation, withstands wind speeds up to 137kmh, and allows for quick removal and installation at the job site
- Durable 1000d seam-sealed cover designed to withstand rain, snow, and extreme weather conditions
- Rigid panels engineered to prevent sagging and water pooling, even under heavy snow
- Six tether points with included carabiner and lanyard for flexible and secure attachment options
- Designed for easy storage: fold and secure with the built-in strap and clip for truck bay storage, or hang from a rail using the provided straps and clips
- Bucket Work Center rail attachment clips for additional attachment points

New



SECURES TO BUCKET  
WORK CENTER RAIL



QUICK & SECURE  
TIGHTENING  
RATCHETING TIGHTENING MECHANISM

**SPECIAL ORDER**



## A-BC523C 1.5 Man Bucket Cover

- Ratcheting tightening mechanism ensures secure installation, withstands wind speeds up to 137kmh, and allows for quick removal and installation at the job site
- Durable 1000d seam-sealed cover designed to withstand rain, snow, and extreme weather conditions
- Rigid panels engineered to prevent sagging and water pooling, even under heavy snow
- Six tether points with included carabiner and lanyard for flexible and secure attachment options
- Designed for easy storage: fold and secure with the built-in strap and clip for truck bay storage, or hang from a rail using the provided straps and clips
- Bucket Work Center rail attachment clips for additional attachment points

New

### KEY FEATURES

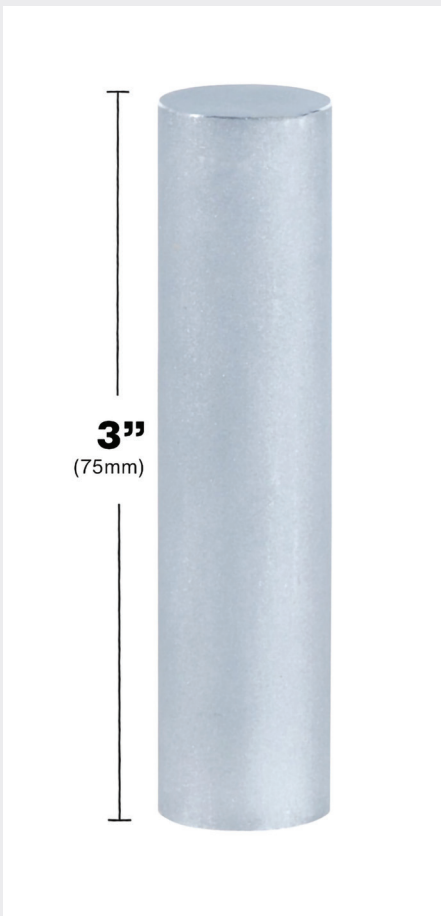


SECURES TO BUCKET  
WORK CENTER RAIL

**A-BC516C  
2 Man Bucket Cover**

- Ratcheting tightening mechanism ensures secure installation, withstands wind speeds up to 137kmh, and allows for quick removal and installation at the job site
- Durable 1000d seam-sealed cover designed to withstand rain, snow, and extreme weather conditions
- Rigid panels engineered to prevent sagging and water pooling, even under heavy snow
- Six tether points with included carabiner and lanyard for flexible and secure attachment options
- Designed for easy storage: fold and secure with the built-in strap and clip for truck bay storage, or hang from a rail using the provided straps and clips
- Bucket Work Center rail attachment clips for additional attachment points

**New**



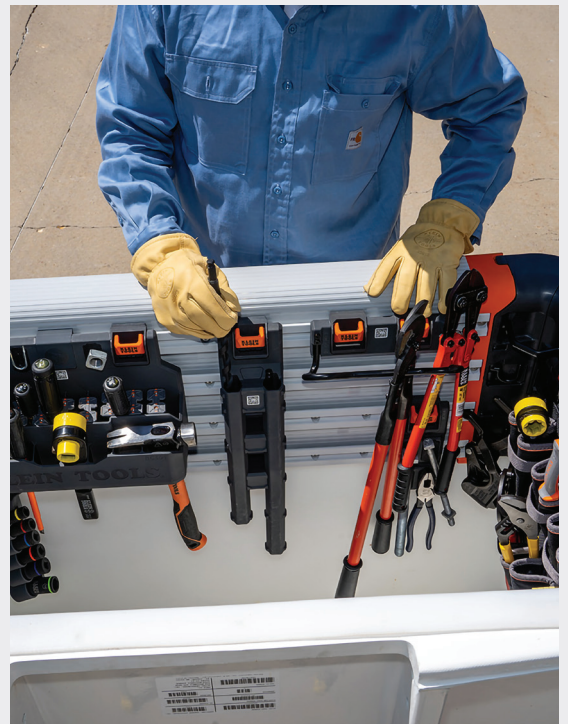
**A-BC507I  
Aluminium Spacer  
3" (75mm)**

- Aluminium Spacer is compatible with Klein's Auger Bit Storage Modules (Part No. A-BC507S, A-BC507C sold separately)
- Aluminium Spacer slides into one slot to store a 12" (305mm) auger bit in the 18" (457mm) holder or store an 18" (457mm) long auger bit in the 24" (610mm) bit holder
- The Bucket Work Center is an ecosystem that will revamp the way a Lineman works
- Lineman can transform their workspace with the Bucket Work Center modules to become The Lineman's Office, similar to how other professionals customise their office space

**New**



**Aerial Work  
Organised**



# SPECIAL ORDER PRODUCTS



Special order products are an addition to the product range that we offer, but don't sit on shelves or in our warehouse these products are available if you wish to order them, please reach out to your local Klein Tools representative, or contact our customer service team ([salesvic@kleintools.com.au](mailto:salesvic@kleintools.com.au)) to place your order.











**BUILT ON LEGACY.  
FUELED BY INNOVATION.**

© 2026 KLEIN TOOLS AUSTRALIA  
2-18 National Drive,  
Dandenong South, VIC 3175

© 2026 KLEIN TOOLS NEW ZEALAND  
178B Carlyle Street,  
Sydenham, Christchurch 8023